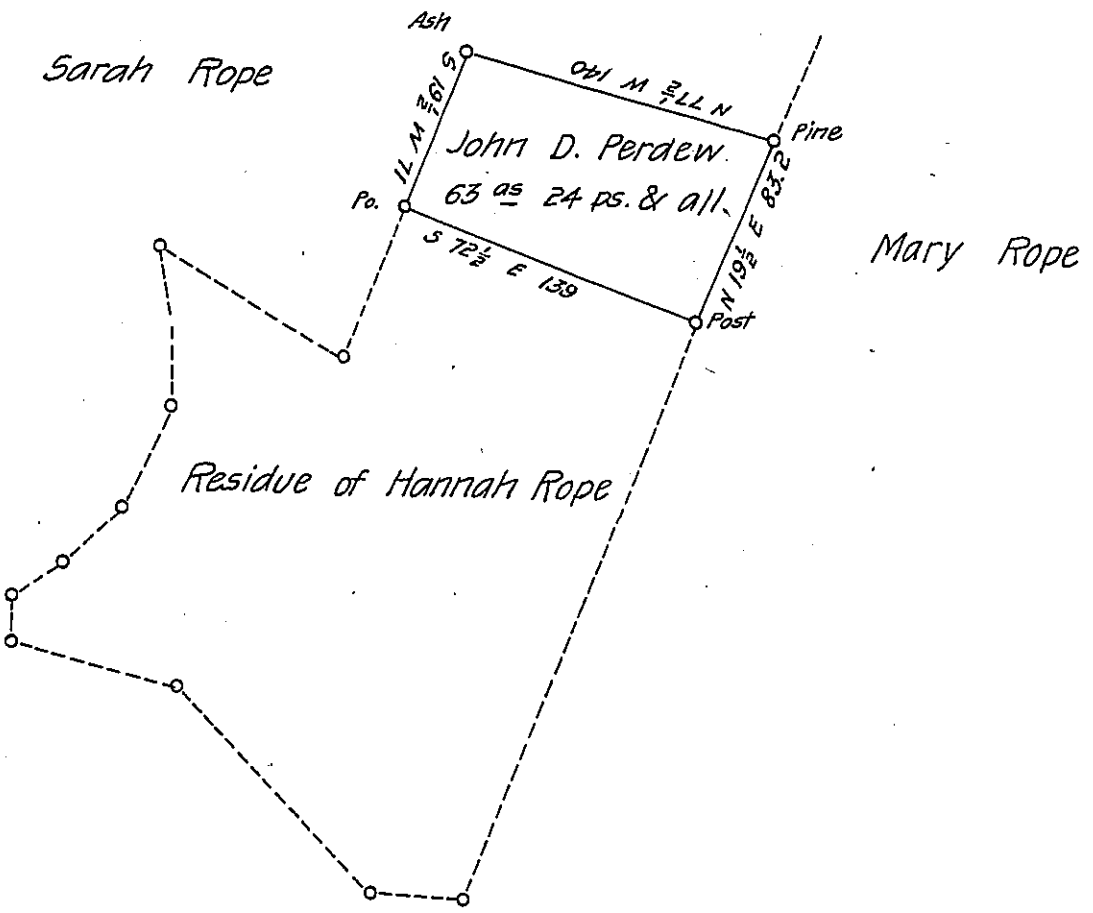


Sarah Rope  
Now Widow Adams



Situate in Southampton township Bedford County. Containing  
 63 <sup>as</sup> 24 perches and the usual Allowance of Six per. Cent for Roads &c.  
 Surveyed for John D. Perdew the 23<sup>d</sup> day of April A.D. 1870 Being a part  
 of a larger tract of land containing 362 acres and 12 ps. & allowance  
 Originally surveyed on warrant to Hannah Rope dated 12<sup>th</sup> Mar. 1794

Sam<sup>l</sup> Ketterman C.S.

To J. M. Campbell Esqr

S. G.

IN TESTIMONY that the above is a copy of the original remaining on file in  
 the Department of Internal Affairs of Pennsylvania, made  
 conformably to an Act of Assembly approved the 16th day of  
 February, 1833, I have hereunto set my Hand and caused  
 the Seal of said Department to be affixed at Harrisburg,  
 this twenty first day of September 1906

*Geo. D. [Signature]*  
 Secretary of Internal Affairs.